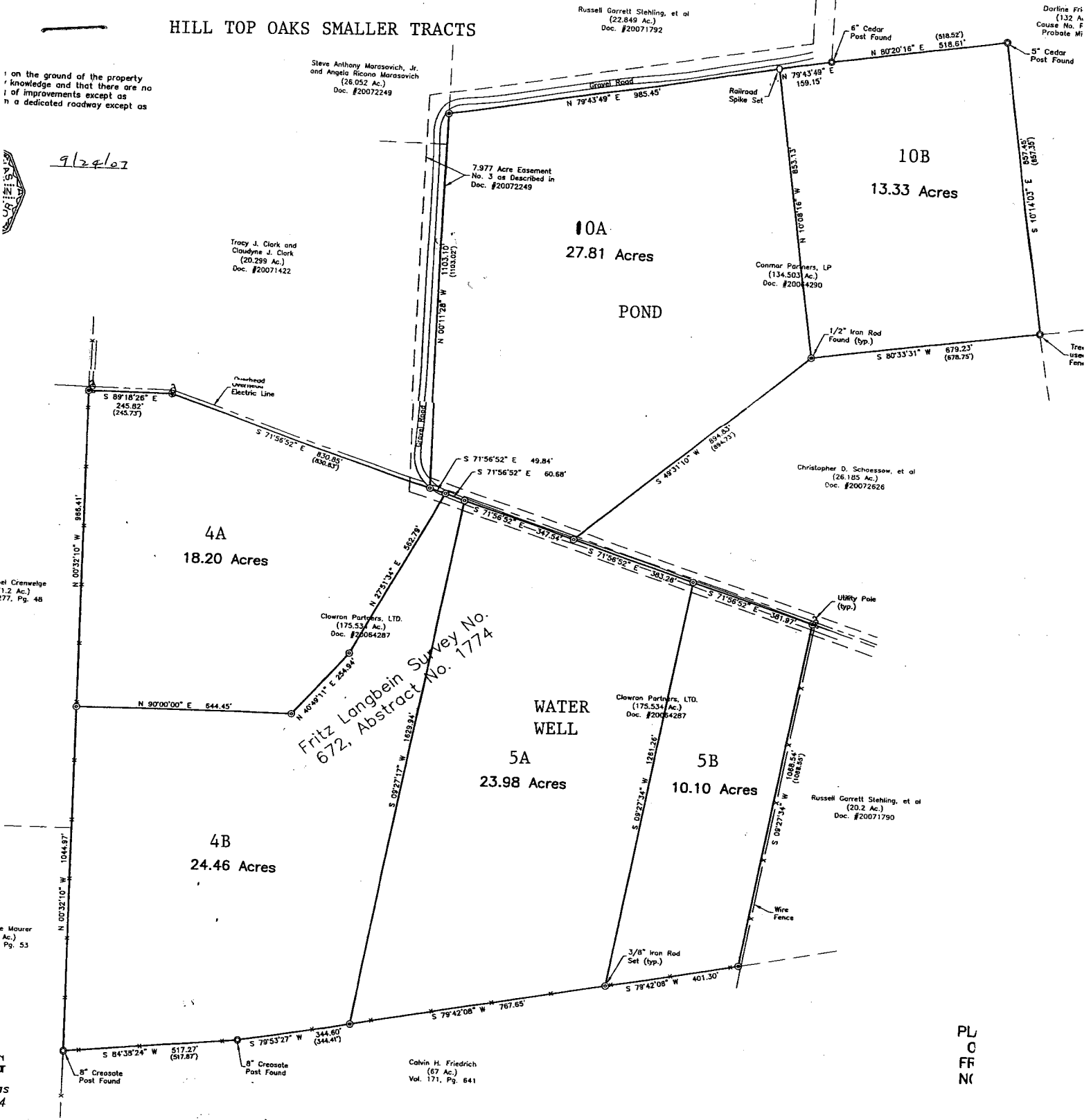


HILL TOP OAKS SMALLER TRACTS

on the ground of the property
knowledge and that there are no
of improvements except as
in a dedicated roadway except as



9/29/07



Tract 4A	18.20 ac.	\$10,500 per ac.	\$191,100
4B	24.46 ac.	\$10,000 per ac.	\$244,600
5A	23.98 ac.	\$10,500 per ac.	\$251,790
5B	10.10 ac.	\$10,950 per ac.	\$110,595
10A	27.81 ac.	\$10,500 per ac.	\$292,005
10B	13.33 ac.	\$11,000 per ac.	\$146,630

PROPERTY IS SUBJECT TO PRIOR WITHDRAWAL, CHANGE, OR SALE WITHOUT FURTHER NOTICE

PL
C
FR
NK

Darline Friedrich
(132 Ac.)
Cause No. P-7894
Probate Minutes

**H. ESQUIBEL
SURVEY NO. 868
ABSTRACT NO. 1421**

Madeline S. Sagebiel
(132.3 Ac.)
Vol. 136, Pg. 377

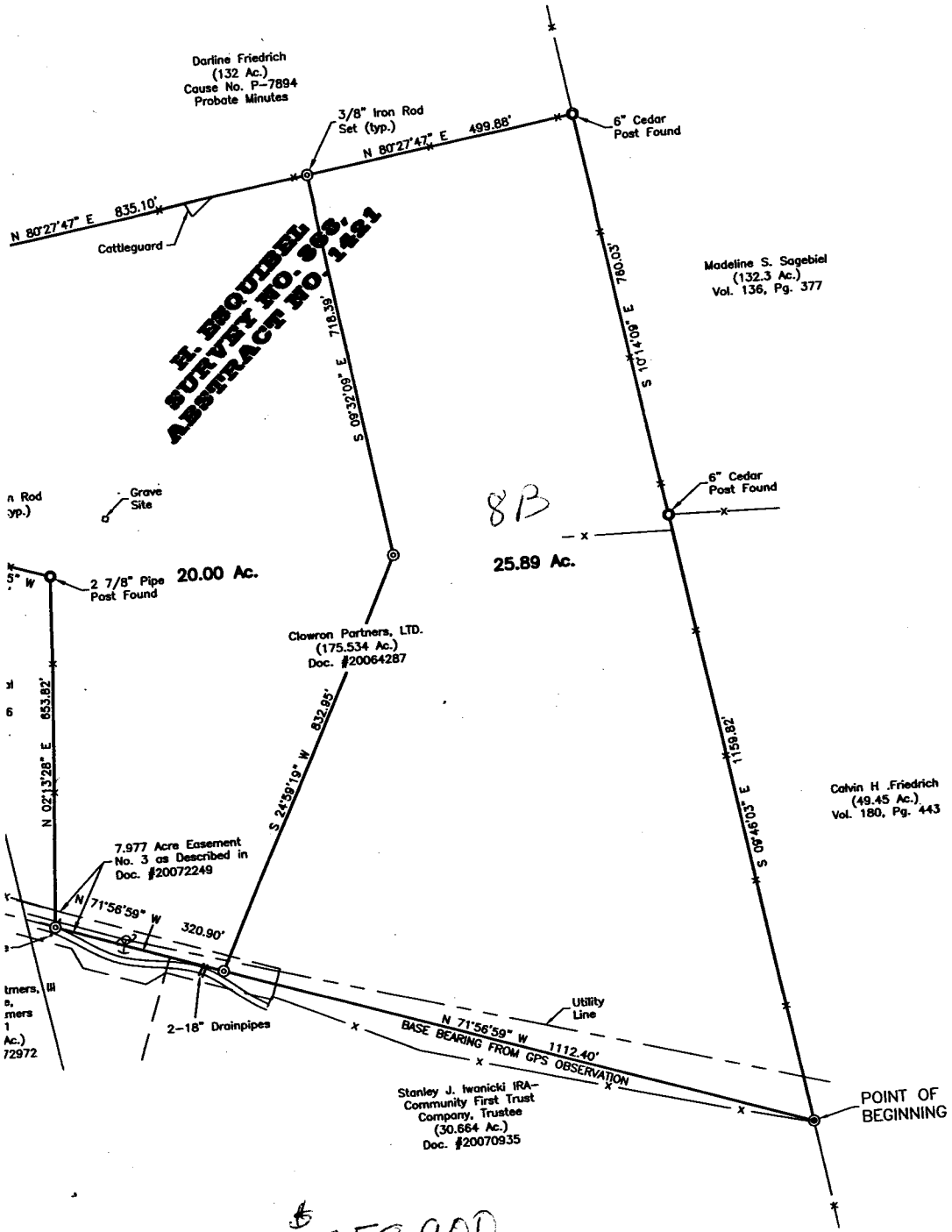
Calvin H. Friedrich
(49.45 Ac.)
Vol. 180, Pg. 443

Stanley J. Iwanicki IRA-
Community First Trust
Company, Trustee
(30.664 Ac.)
Doc. #20070935

Clowron Partners, LTD.
(175.534 Ac.)
Doc. #20064287

20.00 Ac.

8B
25.89 Ac.



8B \$ 258,900

PLAT SHOWING A 20.00 ACRE TRACT AND
A 25.89 ACRE TRACT OUT OF THE
H. ESQUIBEL SURVEY NO. 868,
ABSTRACT NO. 1421
IN GILLESPIE COPUNTY, TEXAS