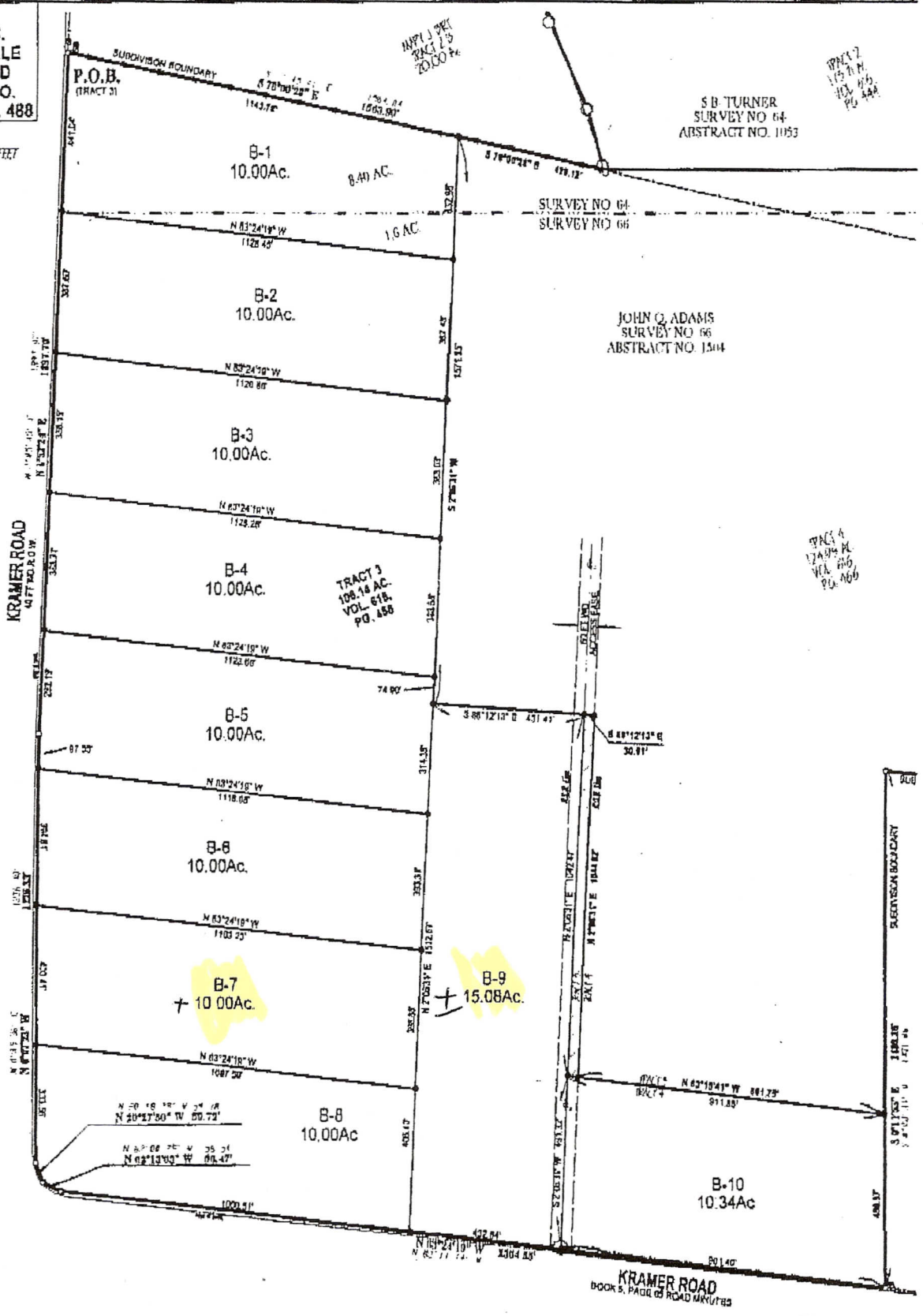


TRACT 3  
108.14 AC.  
BIERSCHWALE  
CREDIT AND  
LENDING CO.  
VOL. 618, PG. 488

SCALE: 1" = 200 FEET



C.C.R. = Gilchrist County Deed Records  
 C.C.P. = Gilchrist County Plat Records  
 C.C.L. = Gilchrist County Deedment Records  
 C.C.P.S. = Gilchrist County Real Property Records  
 C.C.D. = Gilchrist County Deed of Land Records  
 C.C.O.P. = Gilchrist County Official Property Records  
 P.O.B. = Point of Beginning of Survey & Boundaries  
 (None) = Record bearing and/or distance not in existing record, recorded plat, etc.

BEARING ERRORS  
 TRUE NORTH DEDUCED BY GPS OBSERVATIONS.  
 Records Only in smaller state print near monument calls.

SURVEY PLAT OF VARIOUS TRACT OUT OF:

[TRACT THROUGH] A 108.14 ACRE TRACT OF LAND SITUATED IN GILCHRIST COUNTY, TEXAS, BEING 8.4 ACRES OUT OF THE S. B. TURNER SURVEY NO. 64 ABSTRACT NO. 1053; AND 87.74 ACRES OUT OF THE JOHN Q. ADAMS, SURVEY NO. 66, ABSTRACT NO. 1504; BEING PART OF

677.11  
90 78 M.

O.C.A.  
FRYMAN ETL  
D. 25-26  
VOL. 127 PG. 467

P.O.B.  
(TRACT 2)

D-1  
~~35.44~~ Ac.  
± 22

D-2  
35.44 Ac.  
± 34

D-3  
~~34.87~~ Ac.  
± 31

D-4  
~~47.44~~ Ac.  
± 47

D-5  
38.88 Ac.

TRACT 2  
173.31 AC  
VOL. 816  
PG. 444

JOHN Q. ADAMS  
SURVEY NO. 88  
ABSTRACT NO. 130A

TRACT A  
149.94 AC  
VOL. 816  
PG. 444

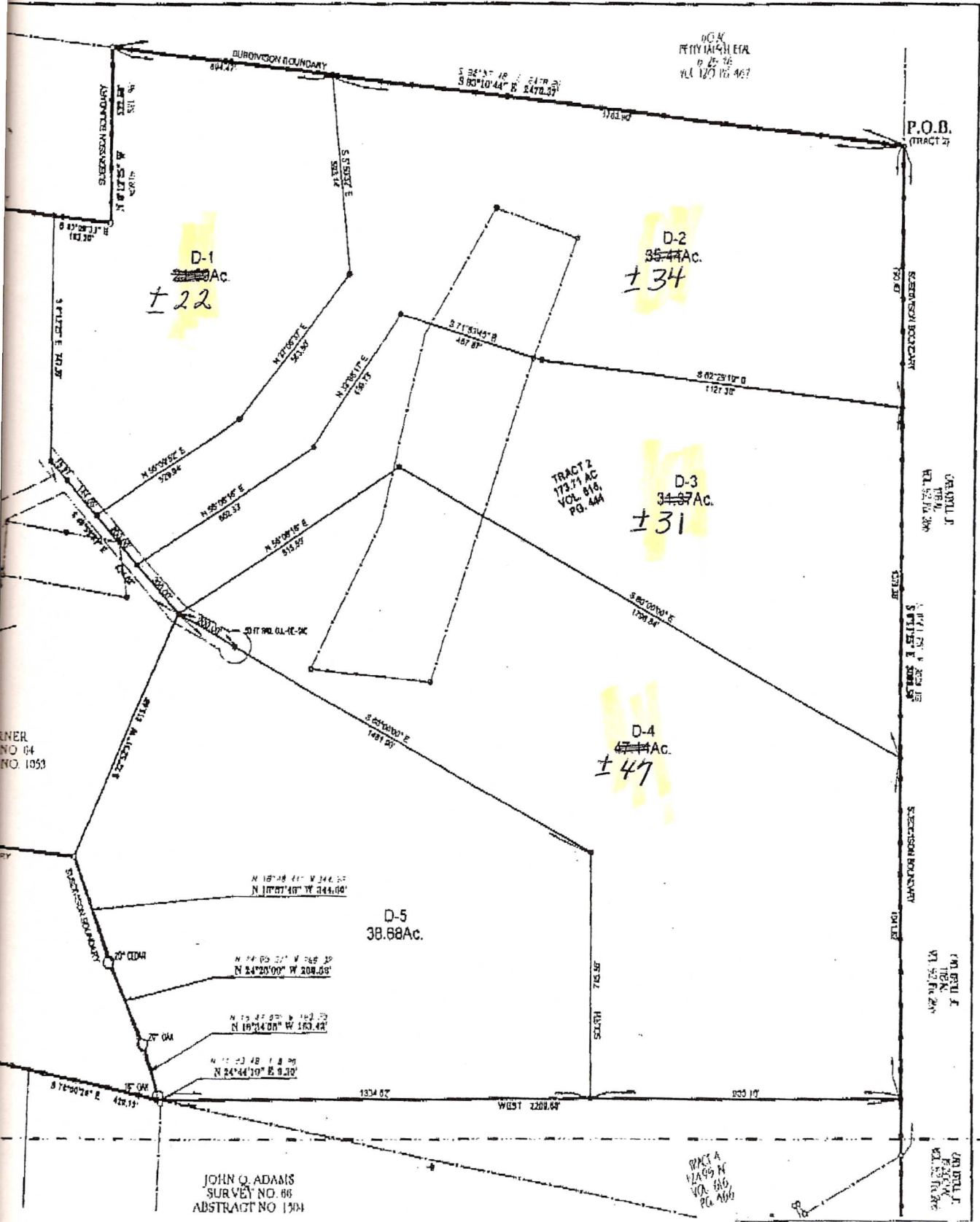
GRANT J  
FRYMAN

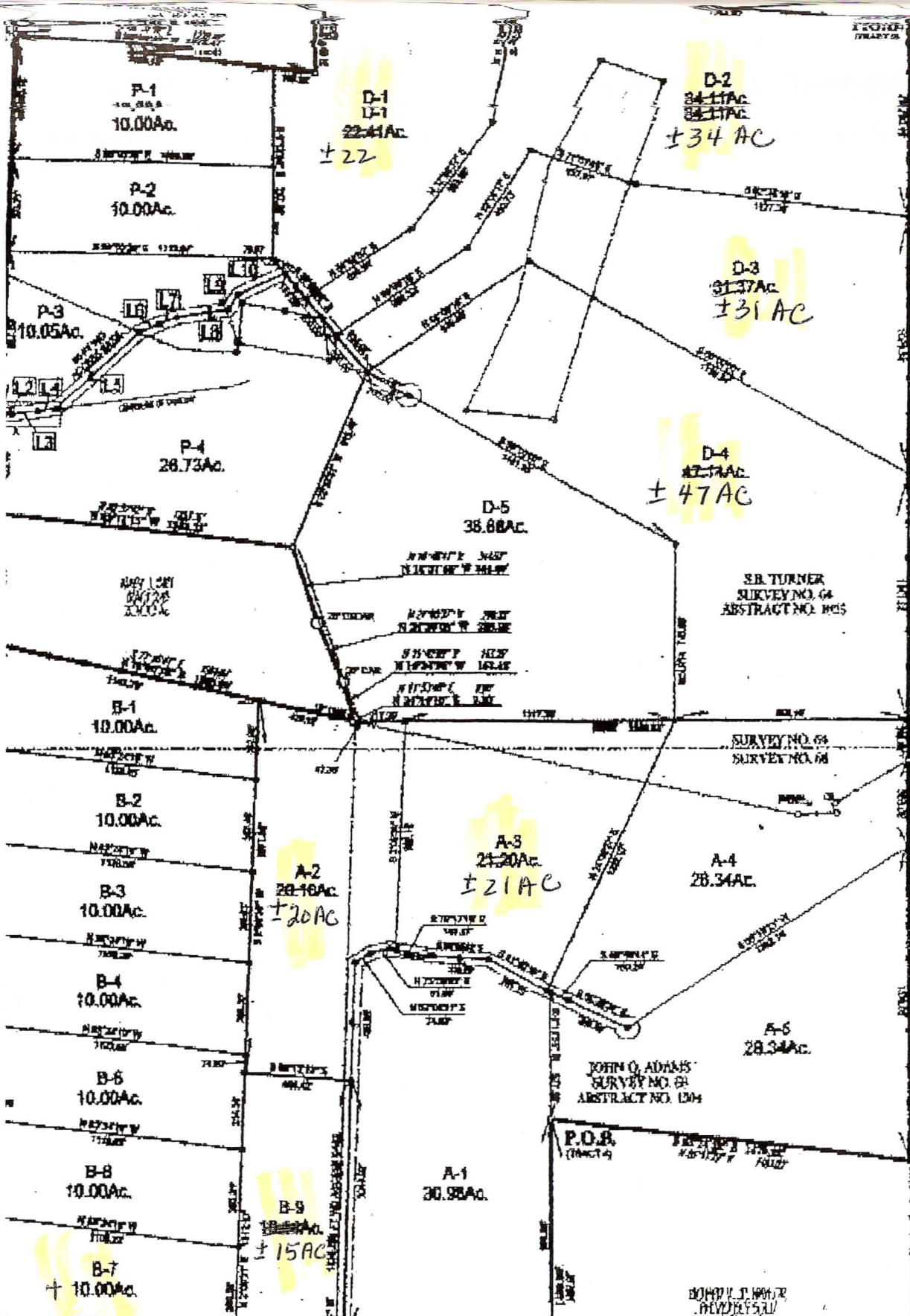
GRANT J  
FRYMAN

GRANT J  
FRYMAN

GRANT J  
FRYMAN

GRANT J  
FRYMAN





P-1  
10.00Ac.

P-2  
10.00Ac.

P-3  
10.05Ac.

P-4  
28.73Ac.

B-1  
10.00Ac.

B-2  
10.00Ac.

B-3  
10.00Ac.

B-4  
10.00Ac.

B-5  
10.00Ac.

B-6  
10.00Ac.

B-7  
10.00Ac.

D-1  
22.41Ac.

± 22

D-2  
34.11Ac.

± 34 AC

D-3  
31.37Ac.

± 31 AC

D-4  
47.71Ac.

± 47 AC

D-5  
38.88Ac.

A-2  
20.10Ac.

± 20 AC

A-3  
21.20Ac.

± 21 AC

A-4  
28.34Ac.

A-5  
28.34Ac.

A-1  
30.98Ac.

B-9  
15.00Ac.

± 15 AC

S.B. TURNER  
SURVEY NO. 64  
ABSTRACT NO. 1065

SURVEY NO. 64  
SURVEY NO. 68

JOHN Q. ADAMS  
SURVEY NO. 69  
ABSTRACT NO. 1044

P.O.B.  
(TRACT 9)

JOHN J. HARRIS  
RECORDS

JOHN J. HARRIS  
VOL. 52, P. 286

JOHN J. HARRIS  
VOL. 52, P. 286

JOHN J. HARRIS  
VOL. 52, P. 286